

CUSTOMER SUCCESS STORY

Next Generation Business Intelligence A Fully Automated Enterprise Data Warehouse for Porta



porta



www.datavault-builder.com

KEY TAKEAWAYS

- Thanks to the Data Vault concept, and its easy implementation with Datavault Builder, data can now be stored and managed more organized and efficiently.
- Greater flexibility for agile development.
- Short-term provisioning of Data Marts for specialized departments with up to 200 KPIs, which are then accessed by Power BI.
- The EDWH is developed by the Data Engineering and Data Analytics departments in a comprehensive collaboration as a generally accepted Single Point of Truth.
- Snowflake database resources are dynamically scaled, resulting in overall cost savings.

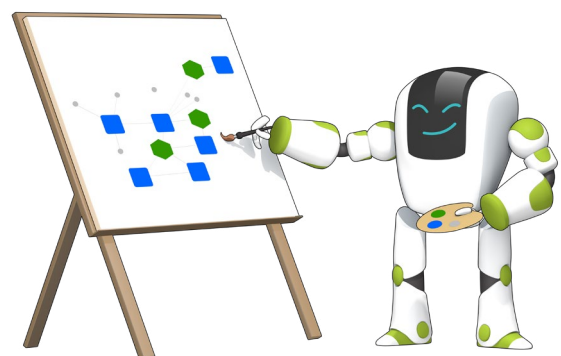
SITUATION

At Porta, developers had implemented individually specific reporting requirements, leading to fragmentation in data processing. The creation of various specific MS SQL instances, the use of SSIS (SQL Server Integration Services), and the manual consolidation of data in Excel resulted in a non-uniform and inefficient process.

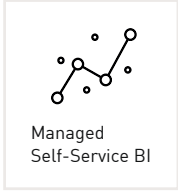
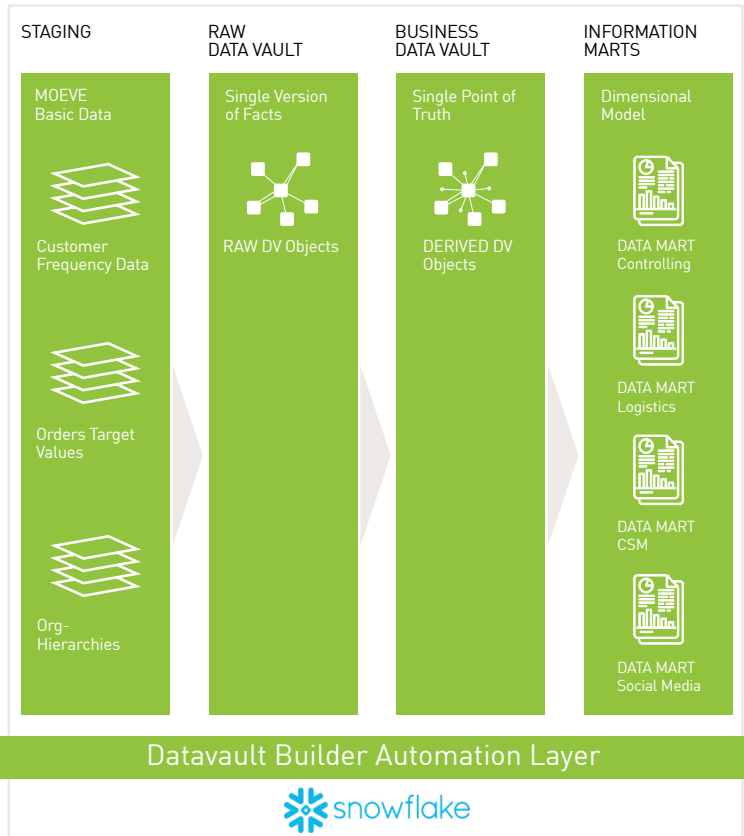
This multitude of approaches to data processing complicated coordination and led to a suboptimal overall state of the reporting structure.

GOAL

The overarching goal was to build a centralized and modern Enterprise Data Warehouse (EDWH) in the form of a Single Point of Truth (SPoT). This initiative was intended to provide several hundred users and decision-makers with a reliable data analytics platform. The desired outcome was a comprehensive Decision Support System (DSS) that enables decisions to be made quickly based on correct and up-to-date data. The cooperation of the Data Engineering and Data Analytics teams was crucial to create a state-of-the-art solution that meets the highest standards of efficiency, precision and innovation.



- MOEVE WMS
- Customer Frequency Data
- POS-Data
- Orders Target Values
- Social Media
- E-Shop Mediadata
- Cost Planning
- Projects
- CSM
- Google Analytics Mediadata



SOLUTION

To meaningfully and sustainably consolidate the heterogeneous source system landscape, the proven Data Vault standard was used. Porta carried out the implementation of the Data Vault 2.0 standard with the Datavault Builder. For Thorsten Kowitz, CIO at Porta, the intuitive operation and the possibility of agile development were decisive. The “Data Platform as a Service” approach allowed for overall cost savings. Power BI was used as the reporting tool, where data is modeled in Datavault Builder and provided in Snowflake in the requirement-specific Data Marts in the Dimensional Model. Persisting the business rules in the Enterprise Data Warehouse (EDWH) ensures performance at all times.

Thus, even Data Marts for controlling, which encompass up to 200 KPIs, can be provided without issues. This thoughtful combination of proven standards and modern technologies enables efficient and cost-effective data management at Porta. The Change Data Capture (CDC) logic was implemented to capture all changes in the data from updates, insertions, and deletions of modifications on the databases of the source systems.

RESULT

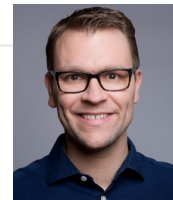
Thanks to the collaboration with Snowflake and Datavault Builder, the Porta Group was able to successfully implement its EDWH and thus establish a fully automated SPoT (Single Point of Truth). Relevant data is already available in a single, trustworthy place, enabling decision-makers and stakeholders to make better and faster decisions.

With the help of advanced modules of the Datavault Builder, including Change Data Capture and automated SCD Type 2 data output, the desired historicization from source systems like the ERP system is displayed in the EDWH. This enables Porta to gain profound analytical insights into the seasonality of their products.

The employed state-of-the-art solution exceeds all expectations and significantly strengthens data-driven decision-making at Porta.

”

“We are very satisfied with our decision to use Datavault Builder and Snowflake. Our powerful EDWH significantly enhances decision-making and streamlines the digitalization and optimization of our business processes.”



– **Thorsten Kowitz**
CIO Porta Group

COMPANY



The Porta Group is a family-run business with operations across Europe and is one of the largest omnichannel furnishing companies in Germany. The Porta Group includes approximately 7,000 employees from the sales channels Porta and SB-Möbel BOSS, the Czech-Slovak furniture store chain ASKO, and the furniture dealer Möbel Letz from Saxony-Anhalt.

Datavault Builder is an end-to-end data warehouse automation platform that covers all aspects and phases of a data warehouse, including design & development, lifecycle management and operations.

By using proven standards, users are enabled to start their agile data warehouse immediately, generating business value in the first sprint.

CONTACT

2150 Datavault Builder AG

+41 32 511 27 89

contact@datavault-builder.com

www.datavault-builder.com